

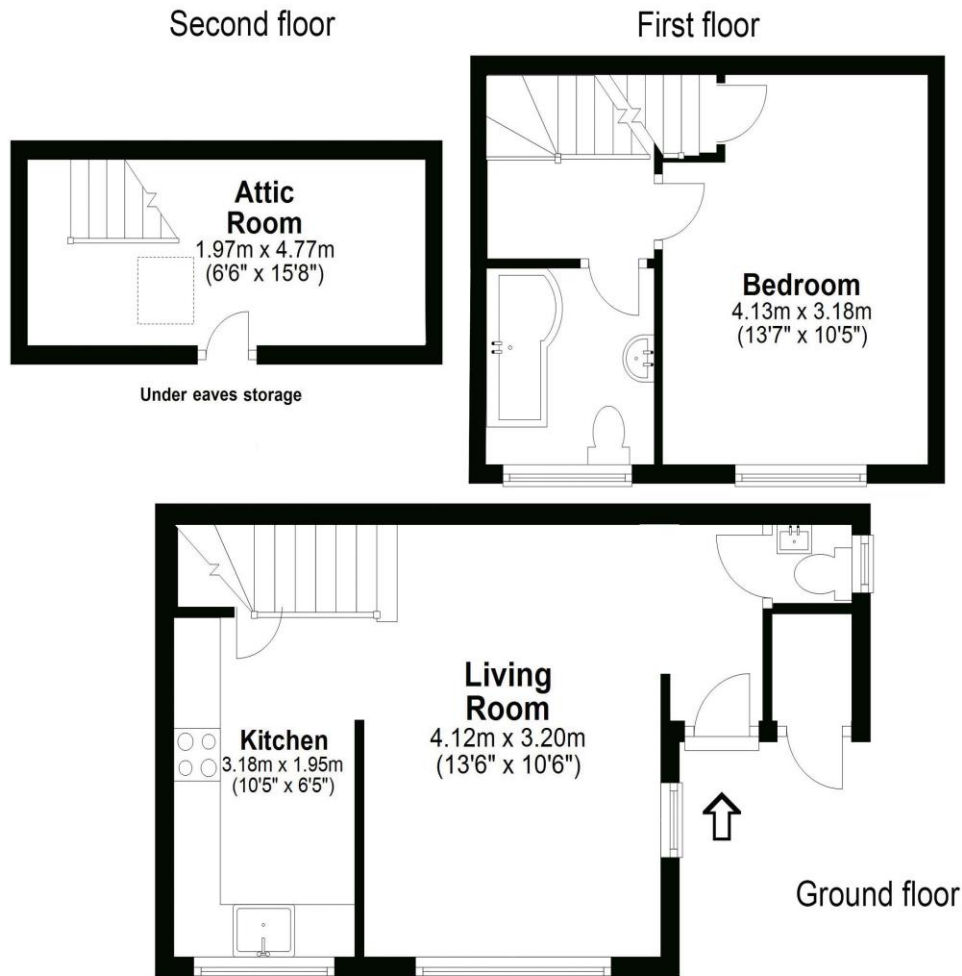


**16 Alpine Road Walton-On-Thames Surrey KT12 2NH**

**£1,500 pcm + Initial deposit**



Approximate gross internal floor area 56.7 Sq M 610 Sq Ft



Whilst every attempt has been made to ensure the accuracy of the floor plan contained here, measurements are approximate and no responsibility is taken for any error, omission, or mis-statement. The plan is for illustrative purposes only and should be used as such by any prospective purchaser.

A one-bedroom end of terrace house offered in excellent condition having been previously renovated throughout. The finish is very stylish and on trend with current demand. A downstairs toilet has been added and the kitchen / bathroom are both super modern and impressive. There is gas central heating and double glazing throughout. The most surprising feature to the house is found in the bedroom, with a staircase leading up to a bonus loft room also superbly presented. Externally there is a small front garden (not fenced) and a boiler cupboard giving some additional storage room. There is one allocated parking space for the house. An excellent location in this small cul de sac within the centre of town. An ideal spot to walk into the centre or down to the River Thames. Unfurnished. EPC Rating C.

Available 14th February 2026.





**AGENTS NOTES:** These details do not constitute any part of an offer or contract. In issuing them we do not have any authority to give any warranty or representation whatsoever in respect of this property. These details are provided without any responsibility on our part or the part of the vendors. No statements in these details are to be relied upon as representations of fact and purchasers should satisfy themselves by inspection or otherwise as to the accuracy of the statements contained therein.

**Equipment:** We have not tested the equipment or central heating system mentioned in these particulars and purchasers are advised to satisfy themselves as to their working order and condition.

**Measurements:** Great care is taken when measuring but measurements should not be relied upon for ordering carpets, equipment, etc.